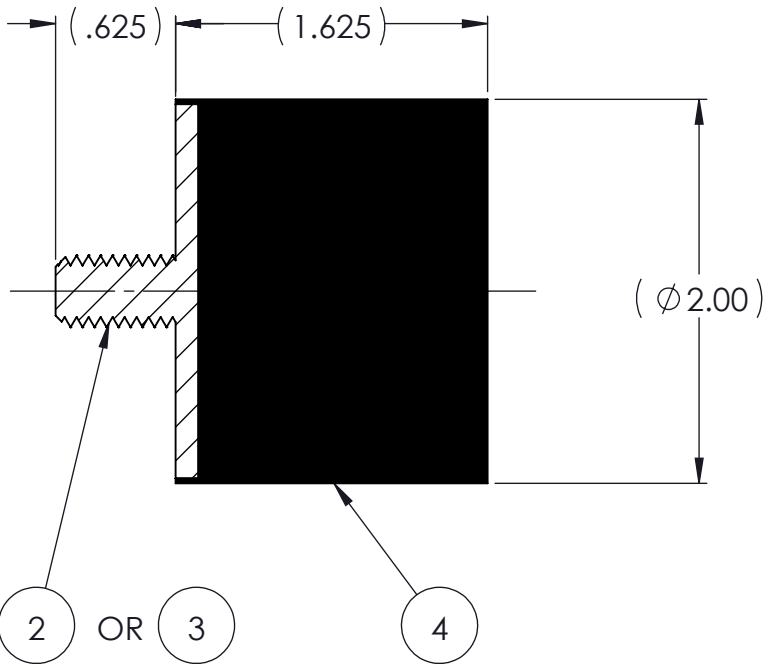
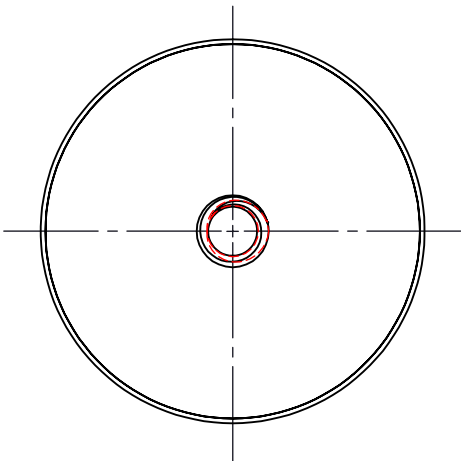
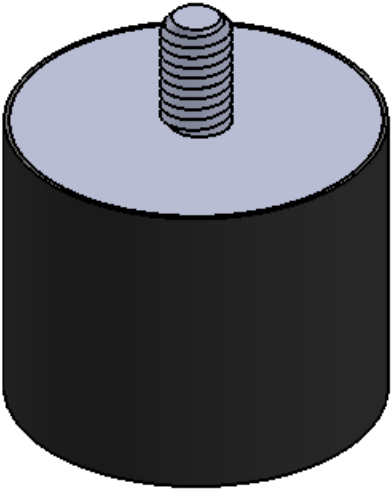


REVISIONS			
REV.	DESCRIPTION	DATE	APPROVED
1	INITIAL RELEASE OF DRAWING	10/2/2014	BS




NOTES:

- 1 MATERIAL: ELASTOMER AND DUROMETER OF 40, 50, 60 OR 70 TO BE SPECIFIED.
- 2 ALL DIMENSIONS ARE REFERENCE.
- 3 AVAILABLE WITH THREADS OF 3/8-16 UNC AND M10 X 1.5.

AR	ELASTOMER	K165-4	1	4
1	MK650-M10	MK650-M10		3
1	MK650	MK650		2
	K165	K165		1
QTY.	DESCRIPTION	PART NUMBER	MATERIAL OR NOTES	ITEM

PROPRIETARY AND CONFIDENTIAL THE INFORMATION CONTAINED IN THIS DRAWING IS THE SOLE PROPERTY OF KARMAN RUBBER. ANY REPRODUCTION IN PART OR AS A WHOLE WITHOUT THE WRITTEN PERMISSION OF KARMAN RUBBER IS PROHIBITED.	SIGNATURE		DATE	UNLESS OTHERWISE SPECIFIED: DIMENSIONS ARE IN INCHES TOLERANCES: .X = .XX = ± 0.031 .XXX = ANGLES = ±1° INTERPRET GEOMETRIC TOLERANCING PER: ASME Y14.5M-1994
	DRAWN	B. SENECA	10/02/2014	
	CHECK	S. BROWN	10/02/2014	
	ENGR	B. SENECA	10/02/2014	
	QA			
	STRESS			
	APPR			



**KARMAN RUBBER**  
**VIBRO-INSULATORS®**  
FOR CONTROLLING NOISE, SHOCK & VIBRATION

SIZE  
**B**

CAGE CODE

DO NOT SCALE DRAWING

TITLE: <b>K165 SERIES VIBRO-INSULATOR WWW.KARMAN.COM</b>			
DWG. NO. <b>K165</b>		REV <b>1</b>	
SCALE: 1:1	WEIGHT: 5.45 OZ.	SHEET 1 OF 1	